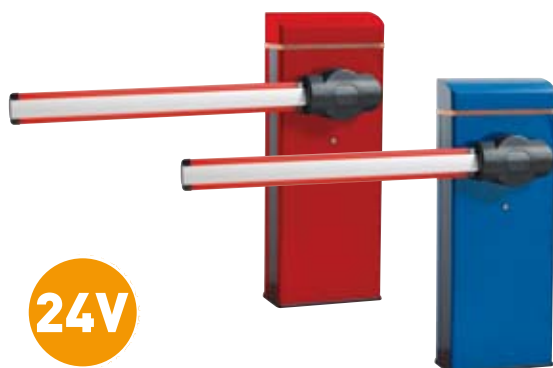


MICHELANGELO SERIES

ROAD BARRIERS



• A MODEL FOR EVERY NEED.

→ Possibility of closing passages up to 8 m.

• SMART TECHNOLOGY.

→ Electronic adjustment of the limit switches.

→ The new position of the control panel makes it possible to operate in a vertical position.

• SAFE USE.

→ The barrier features a very stout structure to guarantee greater protection from vandal attacks and constant reliability in use.

• SIMPLER INSTALLATION.

→ The blinker and the support for the photocells are integrated in the frame (optional), the lights are integrated in the boom (optional).

→ Cabling is simplified by means of the ducting for housing the cables themselves.

REFERENCE	DESCRIPTION	VOLTAGE	BOOM LENGTH
P941006 00002	MICHELANGELO 60 RED	24 V	6 m
P941002 00002	MICHELANGELO 60 BLUE	24 V	6 m
P941007 00002	MICHELANGELO 80 RED	24 V	8 m
P941004 00002	MICHELANGELO 80 BLUE	24 V	8 m

TECHNICAL FEATURES

	MICHELANGELO 60	MICHELANGELO 80
CONTROL PANEL	LIBRA C MV (incorporated)	LIBRA C MV (incorporated)
REVERSIBLE/IRREVERSIBLE OPERATOR	irreversible	irreversible
POWER SUPPLY	120V 60 Hz single-phase	120V 60 Hz single-phase
ABSORBED POWER	0.4 hp (300W)	0.4 hp (300W)
OPENING OR CLOSING TIME	6 s (19.6')	8 s (26.2')
IMPACT REACTION	electronic torque limiter integrated in the control panel	electronic torque limiter integrated in the control panel
TYPE OF LIMIT SWITCHES	electronic opening/closing	electronic opening/closing
MANUAL RELEASE	fast key release	fast key release
OPERATING CYCLE	very intensive use	very intensive use
ENVIRONMENTAL CONDITIONS	from 5°F to + 140°F	from 5°F to + 140°F
DEGREE OF PROTECTION	IP24	IP24
OPERATOR WEIGHT WITHOUT BOOM	680 N (150lb)	680 N (150lb)
DIMENSIONS	see drawing	see drawing
FUSE VALUES LIBRA CMV	1A T	1A T

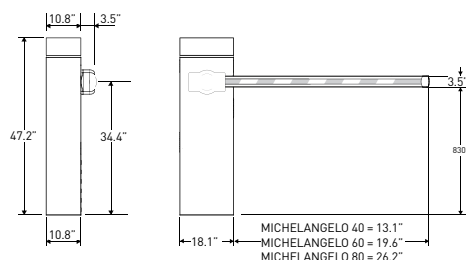
Calculating the maximum boom length of MICHELANGELO 60 and MICHELANGELO 80 road barriers based on the accessories

SB	SB	SB	SB	SB								
1 PCA o MCL PCA	1PCA	1PCA			1PCA	1PCA		1PCA		1PCA		
2 PCA o MCL PCA									2 PCA		2 PCA	
KIT MCL LIGHT	KIT MCL LIGHT	KIT MCL LIGHT			KIT MCL LIGHT	KIT MCL LIGHT		KIT MCL LIGHT	KIT MCL LIGHT	KIT MCL LIGHT	KIT MCL LIGHT	
GA	GA		GA		GA	GA	GA	GA	GA			
BIR						BIR	BIR			BIR		BIR
ELL6 + MICHELANGELO 60	4.7 m	5 m	4.9 m	5.2 m	6 m	5.5 m	5.9 m	6 m	6 m	5.9 m	6 m	6 m
ATT704 + ATT502 + MICHELANGELO 60					5.9 m	5.2 m	5.5 m	5.9 m	5.7 m	5.5 m	6 m	5.8 m
ATT704 + ATT504 + MICHELANGELO 80					8 m	7.1 m	7.5 m	8 m	7.8 m	7.3 m	8 m	7.8 m
ATT706 + MICHELANGELO 60	4.3 m	4.5 m	4.5 m	4.6 m	5.6 m	5 m	5.2 m	5.6 m	5.4 m	5.3 m	5.7 m	5.5 m
ATT706 + MICHELANGELO 80	6 m	6 m		6 m								
ATT704 + MICHELANGELO 40	2.2 m	2.4 m	2.5 m	2.6 m	4 m	3 m	3.4 m	4 m	3.8 m	3.2 m	4 m	3.7 m

Example for Michelangelo 60 + ELL 6: SB + 1PCA + KIT MCL LIGHT + GA = Boom LENGTH 4.7 m. - NOTE: The values given in the table refer to maximum boom length. Booms that are shorter than the values given must be tested and suitably balanced.

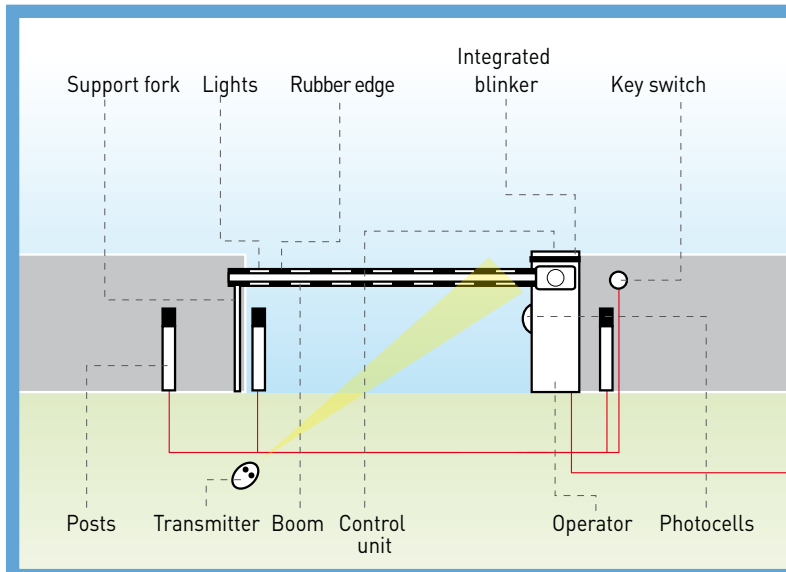
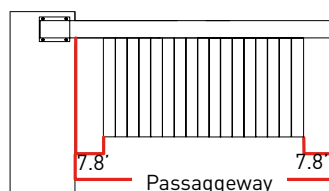


DIMENSIONS



FENCE

At ordering, indicate passageway



ACCESSORIES



P111376 - SCS 1

Serial connection board for QSC D MA, LIBRA C MA, LIBRA C MV, LIBRA C LX, VENERE D, LEO D MA, LEO MV, RIGEL 5 and ALTAIR P.



P111408 - SCS WIE

Circuit board for direct connection of wiegand accessories (such as SELETO, COMPAS SLIM, etc) to the control units QSC D MA, LIBRA C MA, LIBRA C MV, LIBRA C LX, VENERE D, LEO D MA, LEO MV, RIGEL 5 and ALTAIR P.



D573003 - SB

Fence previously mounted on boom. Cannot be applied to BGV/MOOVI 30 models. Its application in the other models gives rise to a reduction of the overall length of the boom (see table).



N728026 - ATT 704

First part telescopic round boom, \varnothing 70, 14' (4,3 m) long.



N728027 - ATT 504

Second part telescopic round boom, \varnothing 50, 15' (4,6 m) long.



N728028 - ATT 502

Second part telescopic round boom, \varnothing 50, 8' (2,45 m) long.



N728022 - ELL 6

Rectangular boom 20' (6 m) long.



N999391 - ACC MCL ELL

Accessories packaging for ELL 6 boom.



P120008 - MCL PCA 6

Boom upper and lower casing profile in rubber for MICHELANGELO (boom max 19.6').



P120010 - MCL PCA 8

Boom upper and lower casing profile in rubber for MICHELANGELO (boom max 26.2').



P120006 - KIT MCL LAMPO

Integrated blinker. It must be connected to KIT SCHEDA MCL. **It must be connected to KIT SCHEDA MCL.**



P120005 00001 - KIT MCL LIGHT

Lighting Kit with 6 lights. To be used in combination with PCA 6, PCA 8 or KIT MCL LAMPO. **It must be connected to KIT SCHEDA MCL.**



D730964 - BM

MICHELANGELO anchor base.



D730991 - MCL FAF

Fixed bar rest fork.



P120009 - KIT SCHEDA MCL

Lights control board. One board is sufficient to have both KIT MCL LIGHT and LAMPO working.



D940008 - MOOVI GA

Movable boom rest rod



I105110 - LIBRA CMV 60

Replacement board for Michelangelo 60



I105123 - LIBRA CMV 80

Replacement board for Michelangelo 80



P125011 - MCL BAT

Battery back-up for Michelangelo



N999386 - ACC MCL ATT

Accessories packaging for ATT 704 boom.



P120018 - THERMO

Heater and accessories for MOOVI, MOOVI BT and MICHELANGELO for temperatures down to -40°F (-40°C)